



**Scout
Recycling
Centre**

Scouts SA Group Fundraising

**HOW TO RAISE FUNDS
USING THE SA CONTAINER
DEPOSIT SCHEME**

Why throw something away when you can be rewarded for recycling it instead?

Recycling with the Scout Recycling Centre gives Scout Groups a way to actively generate their own income and help ease their financial pressures.

Groups can raise much needed funds by collecting, storing and transporting eligible recyclable material for a refund under the Container Deposit Scheme.

Every cent refunded through the Scheme can support local group activities, purchasing equipment, maintaining Scout Halls and fundraising for events.

Show your community how your commitment to the environment can pay off!

21,000

bottles and cans are littered or landfilled in Australia every minute

1977

the year the Container Deposit Legislation (CDL) Scheme began in SA

"By starting your own group recycling, you not only raise valuable funds for your Group and contribute to the environment, the profits raised by the Scout Recycling Centres assist Scouting across South Australia".

Jan Turbill, Chief Commissioner Scouts SA



\$282m

benefit to the environment over the next 20 years



10c

refund for every container



RECYCLING IN ACTION: SCOUTS SA

A number of Scout Groups around South Australia collect recyclable material donations from their local communities, raising anywhere from \$2,000 to \$10,000 per year.

Read on to find out how different Groups are making the Scheme work for them.



Case Study 1: Blackwood Scout Group

Blackwood Scout Group set up a shed area at its Scout Hall where members of the public can drop off recyclable beverage containers.

Volunteers move the donated containers from the shed area to a locked area of the property where they are stored in wheelie bins, before being transported to the Scout Recycling Centre.

The Group also collects recyclable material from the local caravan park every fortnight. Blackwood's recycling efforts bring in between \$2,000 - \$3,000 worth of refunds per year.



Case Study 2: Belair Scout Group

Belair Scout Group actively collects recyclable beverage containers from the public through monthly bottle drives. The Group communicates to local businesses and community groups about the bottle drive in the weeks leading up to the event.

On the day, the Group drives around with trailers to collect the products. Between 6-10 people are involved in the bottle drive which takes approximately 3 hours to complete every month.

The Group also collects recyclable beverage containers at its Scout Hall. It uses large collection bins to store and secure the donations. Belair's monthly bottle drives and collection bins bring in \$6,000 per year.



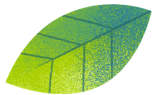
Case Study 3: Fullarton Scout Group

Fullarton Scout Group has set up a 'hole-in-the-wall' operation, allowing members of the public to drop off their recyclable beverage containers into a chute. The containers fall from the chute and into a wheelie bin which is transported to the Scout Recycling Centre.

MAKING THE MOST OF THE SCHEME FOR YOUR GROUP

How can my Group get involved?

Scout Groups can set up a donation site at their local Scout Hall, where friends, family and the community can drop off their donated eligible beverage containers. The Groups are responsible for storing and transporting the containers to an approved collection point where they will be paid 10 cents per eligible container.



What is a donation site?

A site to collect eligible containers without paying the refund to those who deposit containers at that point. Essentially, containers are gifted to the donation site operator (e.g. Scout Group), who can then return them to an approved collection point for a refund. Please contact us to enquire about our collection service.

What do donation sites look like?

Donation sites will vary from Group to Group. Some may include shed areas with stacked milk crates, labelled wheelie bins, hole-in-the-wall chutes and/or locked storage bins located within a Scout Group's premises.



What makes a good donation site?

Donation sites must be able to collect, store and transport containers. Good donation sites are:

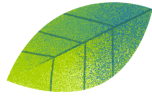
- well lit
- accessible to the public
- pose no health and safety risks to Scouting members and volunteers
- have clear signage.

There may be local council regulations to consider when setting up a donation site. Check with your council to see if you need special permissions and approvals.



How will Scouts SA support our Group's fundraising effort?

To make the most of the Scheme, Groups must register their interest with a Scout Recycling Centre. Participating Groups will be promoted on the Scout Recycling Centre website and to local media, helping members of the community locate donation sites across the state.



Do Scout Groups get to keep the money they raise through the CDS?

Yes. While there may be an initial cost to establish a Scouts SA donation site, 100% of proceeds raised by the Group stay with the Group!



REGISTER YOUR INTEREST

To find out more about the Scout Recycling Scheme or register your Group's interest, contact 8285 8500 or email src@scoutrecycling.com.au



Step 1: Collect

- Find a way to collect eligible containers.
- Set up as a donation point at your Scout Hall - for example milk crate shelter, or hole-in-the-wall chute.
- Plan a bottle drive.

Step 2: Store

Store eligible containers at your Scout Hall.

- Wheelie bins
- Locked storage bin.

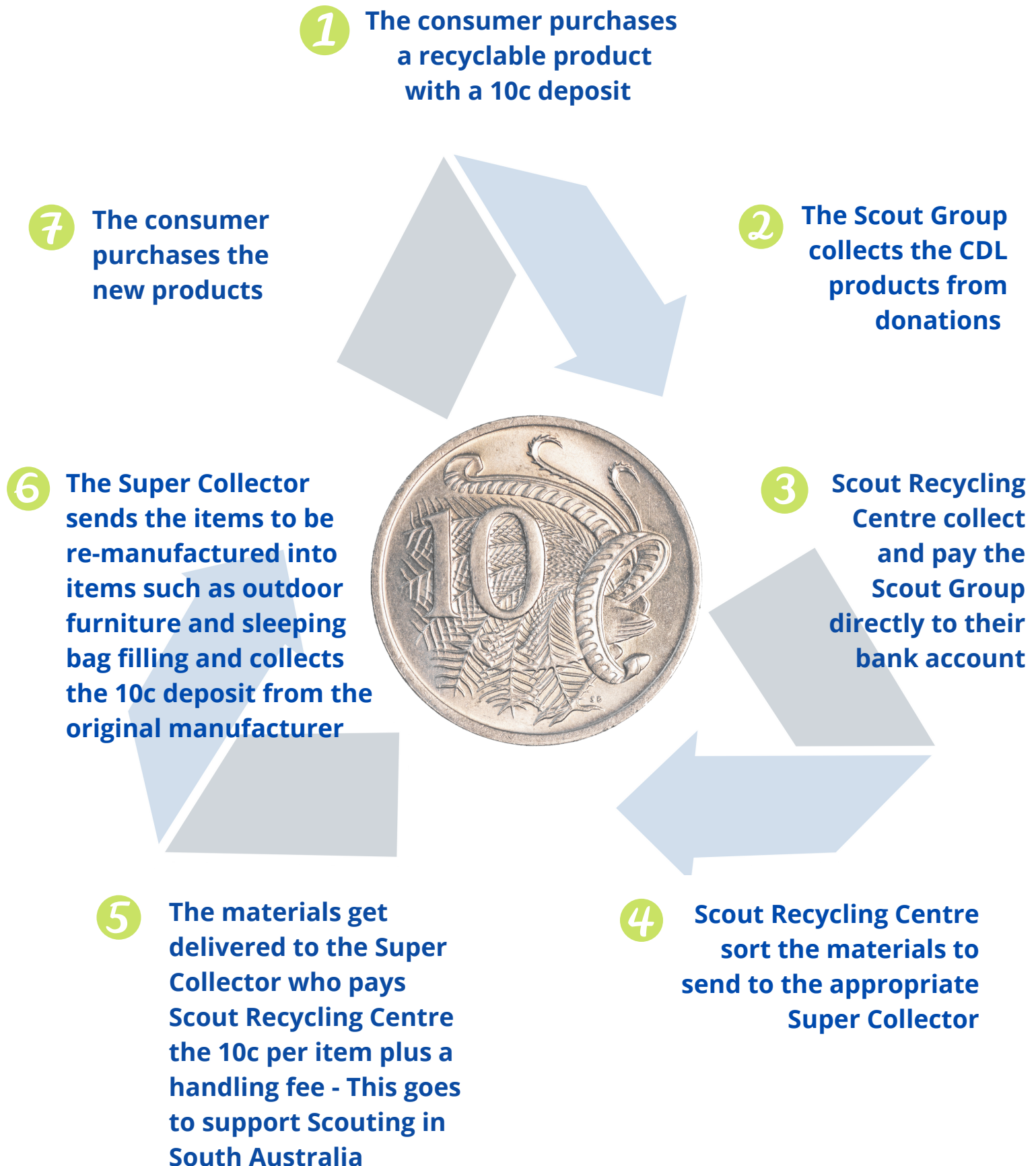
Step 3: Transport

Deliver your Scout Group's collected goods to an approved collection point or contact Scout Recycling Centre for details about collection.

Step 4: Raise Funds

Groups are remitted for their donation via Electronic Funds Transfer.

HOW DOES THE RECYCLING CIRCULAR ECONOMY WORK?



OTHER WAYS TO SUPPORT SCOUTING THROUGH SCOUT RECYCLING

- Refer your Sports/Community Club to a Scout Recycling Centre. We can offer the same collection arrangements to help support their fundraising efforts.
- Refer a cafe, bar, restaurant or other business. We can offer no fuss recycling and collection to support SA businesses.
- We can service:
 - Schools
 - Clubs
 - Sporting Groups and Grounds
 - Retail
 - Restaurants/cafes
 - Factories
 - Other business industries
- We can organise recycling for your event!

*Each business gets assessed based on location, turnover and site inspection.

Did you know we also pay cash for:

- **Car bodies**
- **Scrap steel**
- **Non ferrous metals**
- **Car batteries**

Fast, easy Electronic Funds Transfer or cash for all eligible beverage containers and scrap metal.

Please call us on 8285 8500 to ask us how!



help the environment



help yourself



help your community